

Pneumatic Manifold End Plate and Gasket

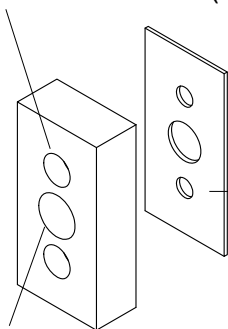


PM-2

5/16" SLOTS

PM-2

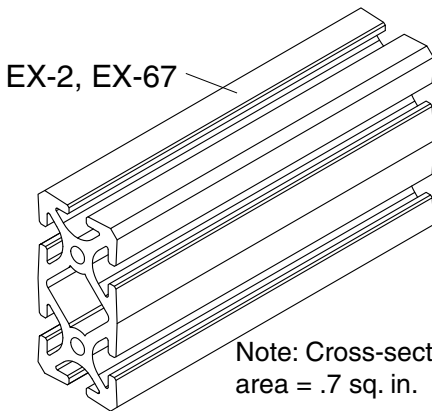
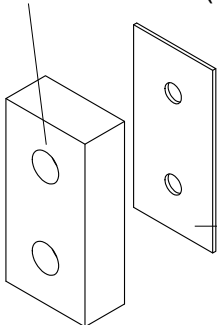
Drilled and C'bored
for 5/16-18 SHCS (2)



3/8 NPT

PM-2B

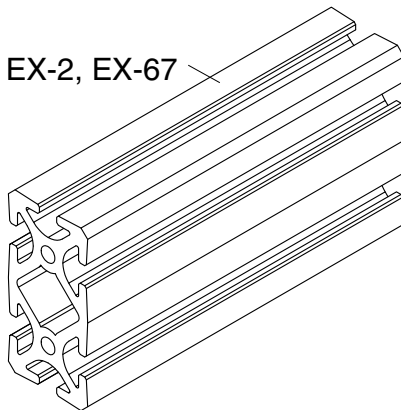
Drilled and C'bored
for 5/16-18 SHCS (2)



EX-2, EX-67

Note: Cross-sectional internal
area = .7 sq. in.

Cork Gasket Included



EX-2, EX-67

Note: Cross-sectional internal
area = .7 sq. in.

Cork Gasket Included

Note: tap extrusion holes
5/16-18 thread

Recommended Hardware
(2) EF-11-1.0

Plate Material - Aluminum
Finish - Clear Anodize