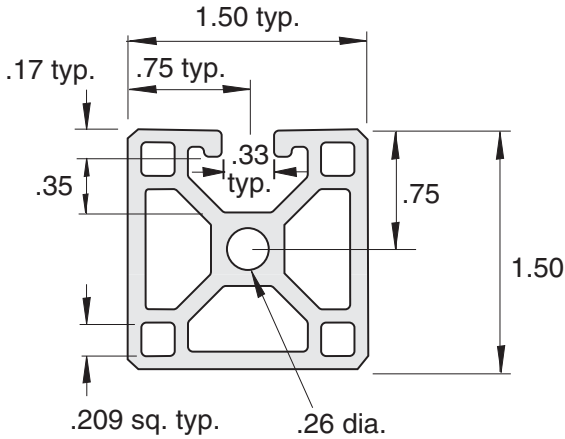


EX-61

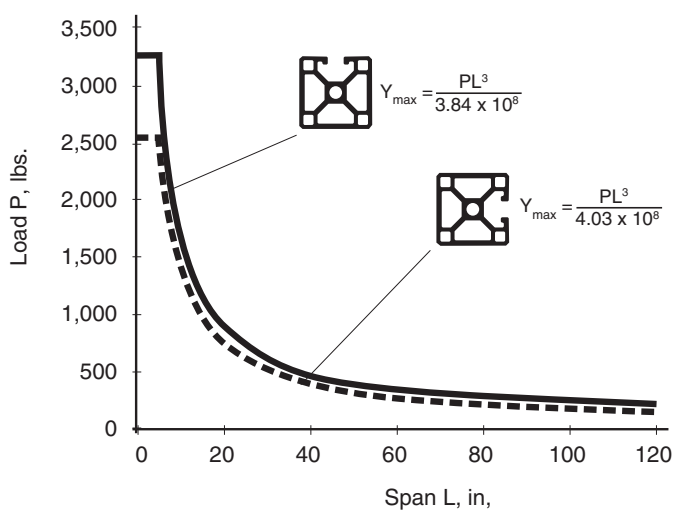
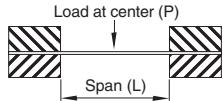


- Finish = Clear anodized
- Material = 6105-T5 Aluminum
- Est. Area = .866 Sq. In.
- Weight/ft = 1.018 lbs
- 96", 192.63" Lengths standard.

Section Properties:
Moment of Intertia in⁴
Section modulus in³

0.200	0.210	
0.267	0.276	

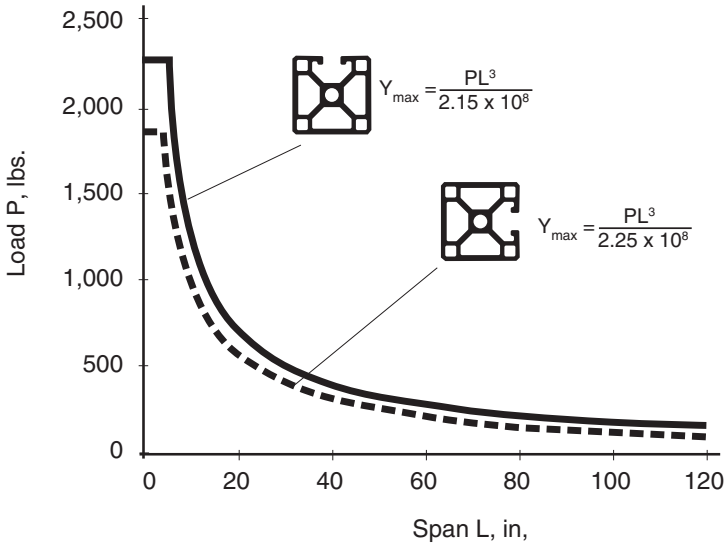
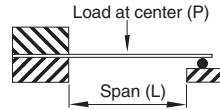
Load condition:
Fixed at both ends, load at center
Deflection = y (inches)



TECHNICAL

EX-61

Load condition:
Fixed at one end, sliding at one end,
load at center
Deflection = Y (inches)



Load condition:
Fixed at one end,
load at unsupported end
Deflection = Y (inches)

