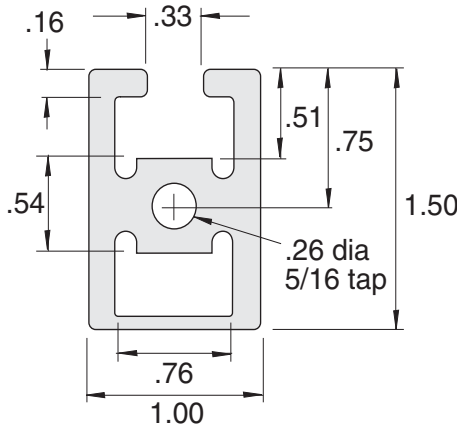


**EX-52**



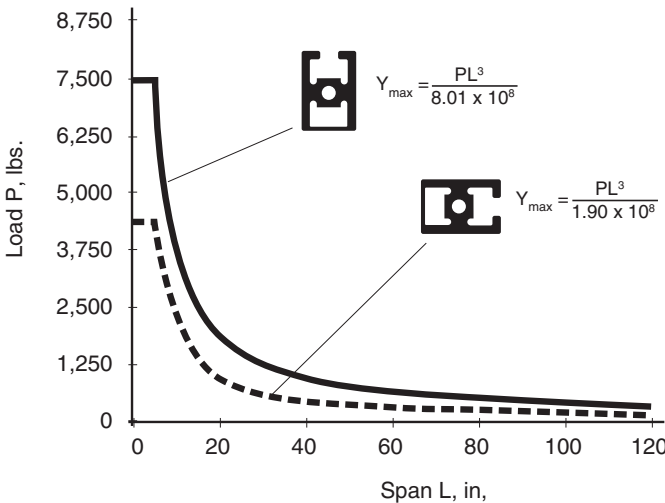
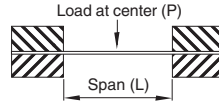
- Finish = Clear anodized
- Material = 6105-T5 Aluminum
- Est. Area = .818 Sq. In.
- Weight/ft = .954 lbs.
- 96", 192.63" Lengths standard.



**Section Properties:**

Moment of Inertia in <sup>4</sup>	0.417	0.099
Section modulus in <sup>3</sup>	0.549	0.198

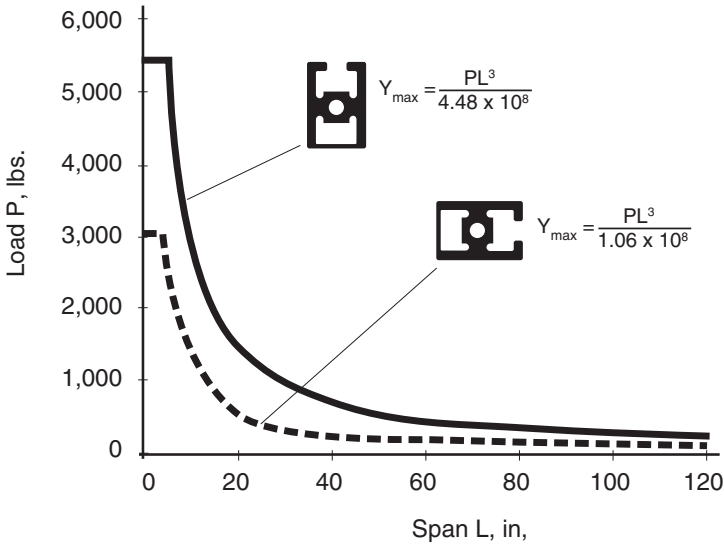
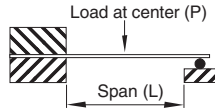
Load condition:  
Fixed at both ends, load at center  
Deflection = y (inches)



TECHNICAL

**EX-52**

Load condition:  
Fixed at one end, sliding at one end,  
load at center  
Deflection = Y (inches)



Load condition:  
Fixed at one end,  
load at unsupported end  
Deflection = Y (inches)

