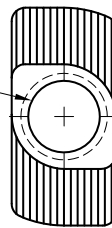


- EF-96** 1/4-20 thd.
- EF-96SS** 1/4-20 thd.
stainless steel
- EF-97** 10-32 thd.
- EF-98** m6 x 1.0 thd.
- EF-99** m5 x 0.8 thd.



Use with 5/16" Slot Extrusions Only

Material - Steel
Finish - Zinc Plated