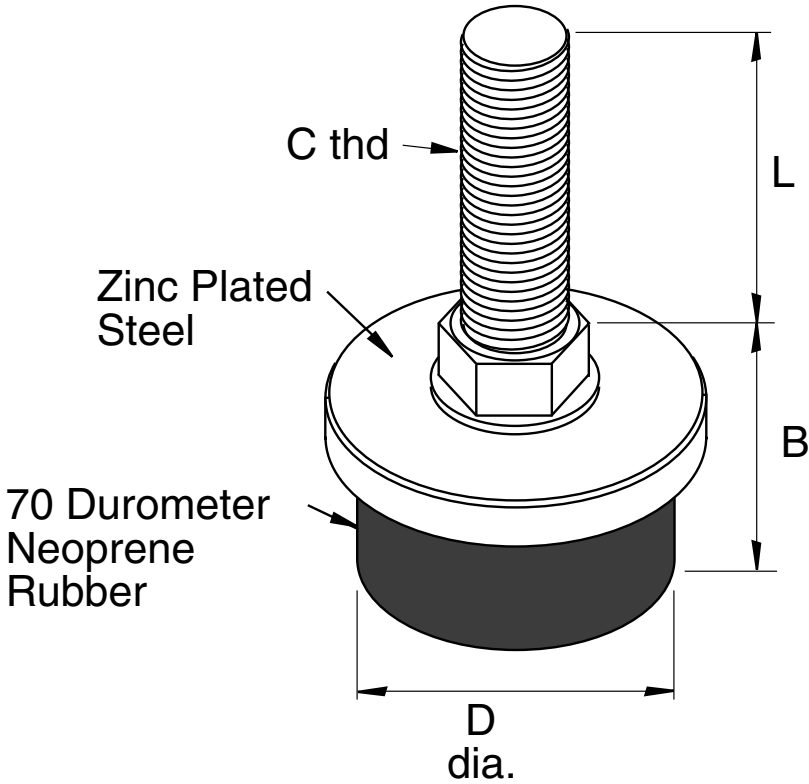


# Adjustable Leg (cushioned)



<b>EAL-7</b>
<b>EAL-8</b>
<b>EAL-9</b>

**5/16" SLOTS**



Part No	Max (lbs) Work Load	C Thd Size	D	B	L
<b>EAL-7</b>	100	5/16-18	1.0	13/16	1 1/4
<b>EAL-8</b>	300	3/8-16	1.5	63/64	3.0
<b>EAL-9</b>	300	1/2-13	1.5	11/16	2.0