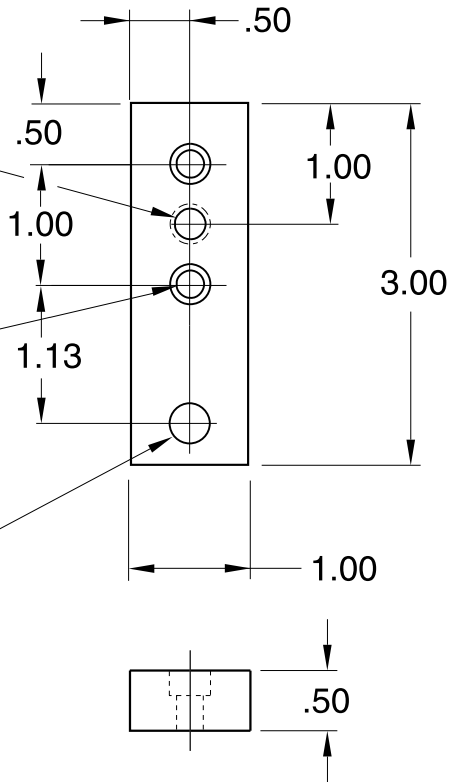


**11-48A** 3/8-16 UNC thru  
**11-48B** 1/2-13 UNC thru

Drilled & C'Bored  
 for 1/4-20 SHCS  
 (2) plcs

7/16" Dia. thru  
 for floor anchor



Recommended  
 Hardware  
 (2) 11-223 SHCS

Material - Aluminum  
 Finish - Clear Anodize

**1/4" SLOTS**