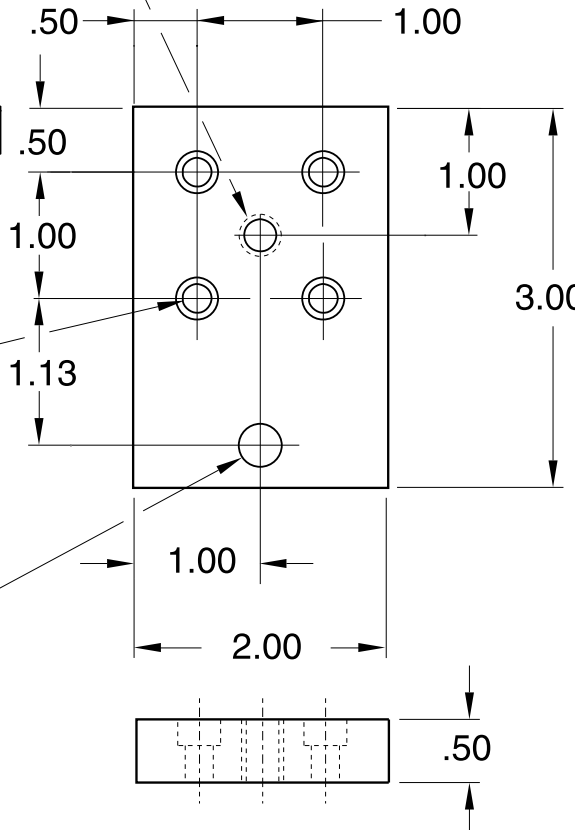


**11-47A** 3/8-16 UNC thru  
**11-47B** 1/2-13 UNC thru

Drilled & C'Bored  
 for 1/4-20 SHCS  
 (4) plc's

7/16 Dia. thru  
 for floor anchor



**1/4" SLOTS**

Recommended  
 Hardware  
 (4) 11-223 SHCS

Material - Aluminum  
 Finish - Clear Anodize