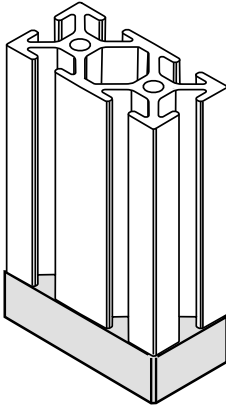
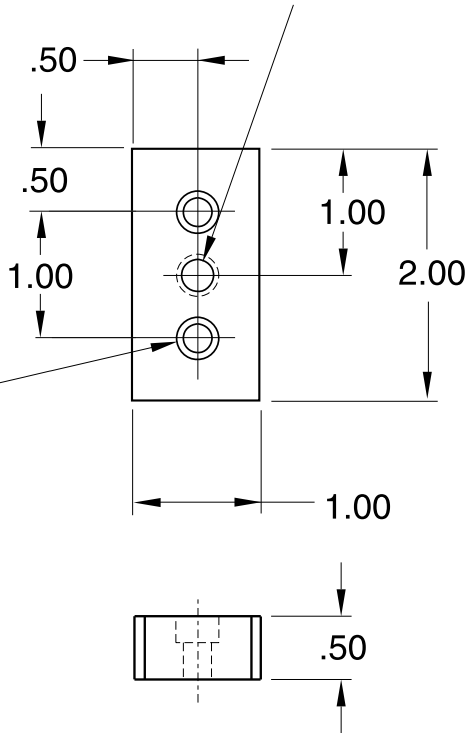


11-45



- 11-45A** 3/8-16 UNC thru
- 11-45B** 1/2-13 UNC thru
- 11-45C** 1/4-20 UNC thru
- 11-45D** 5/16-18 UNC thru



Drilled & C'Bored
for 1/4-20 SHCS
(2) plc's

1/4" SLOTS

Recommended
Hardware
(2) 11-223 SHCS

Material - Aluminum
Finish - Clear Anodize